

# Pottinger Energy Park

# Community Consultative Committee

30 March 2026





## Agenda

1. Project Overview
2. Timelines
3. Stakeholder Engagement

# Pottinger Energy Park



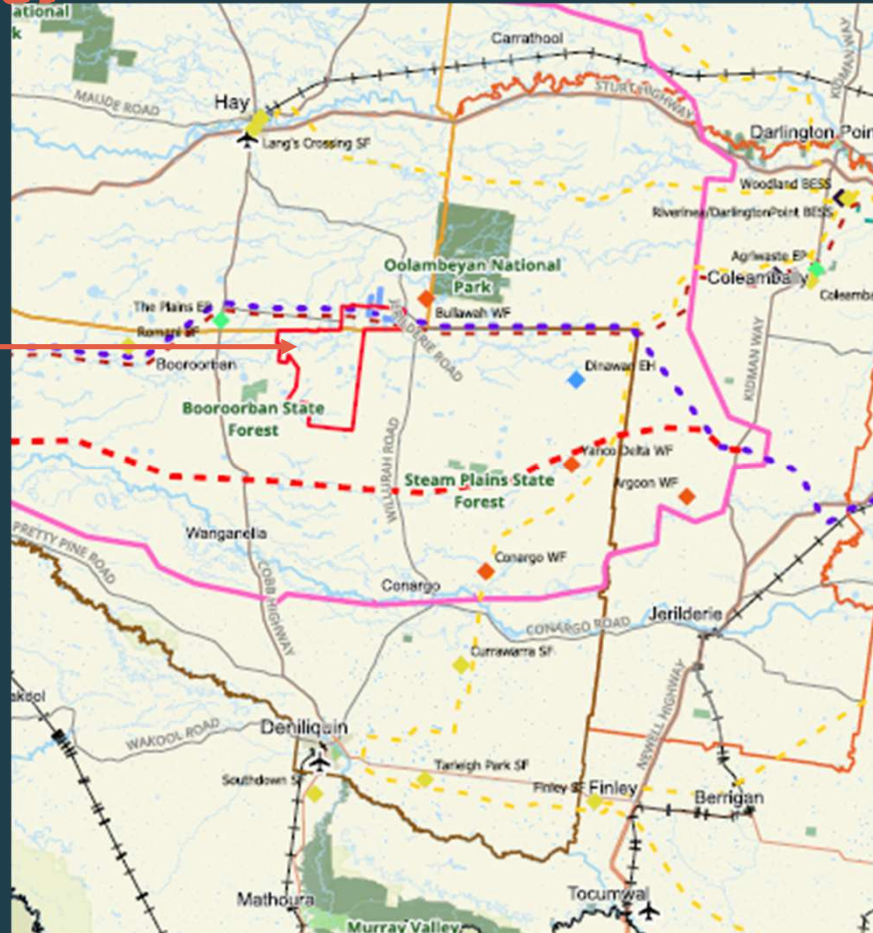
Pottinger Energy Park is being jointly developed by Someva Renewables and AGL Energy.



# Pottinger Energy Park Location



Pottinger  
Energy Park



# Pottinger Energy Park Overview



## Stage 1



831

Megawatts of  
clean energy



118

Wind Turbines



Battery  
Power

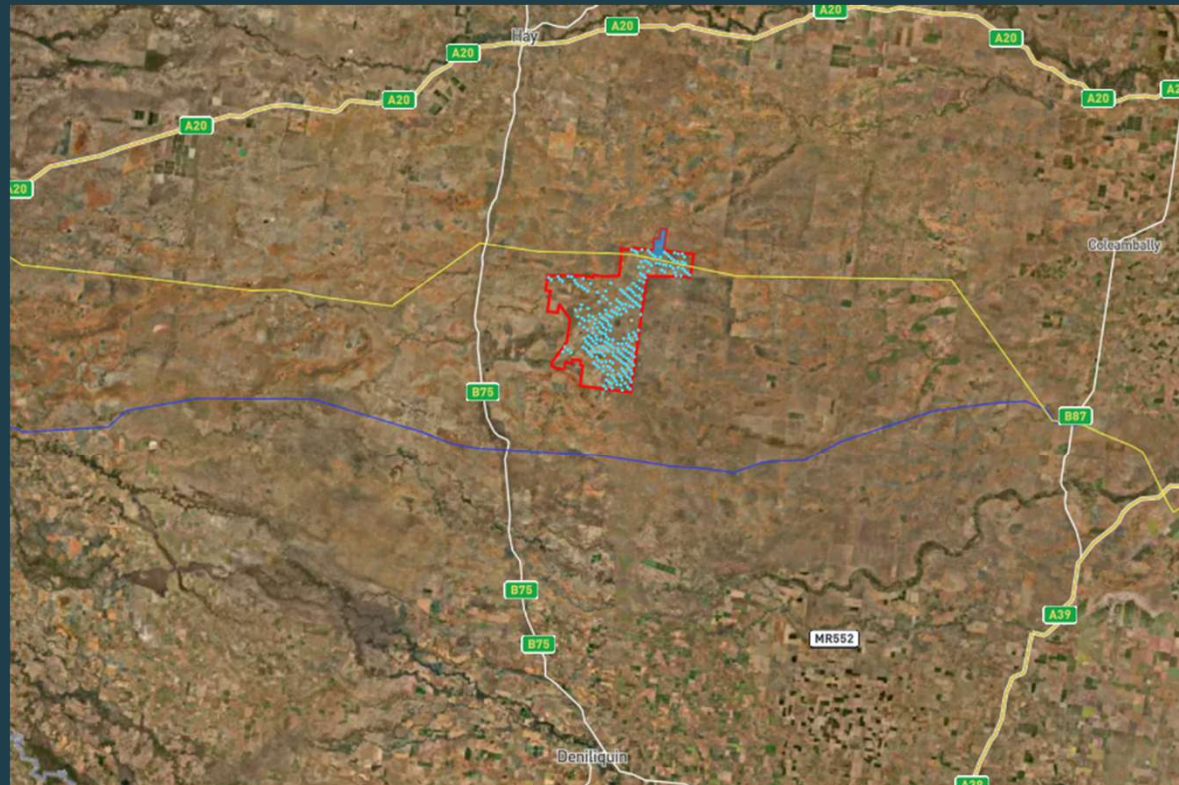
400MW/1,600MWh



510,000

Homes powered by clean  
and reliable energy

# Pottinger Energy Park Location



  
INVESTIGATION  
AREA

  
PROJECT ENERGY  
CONNECT LINE

  
TURBINES

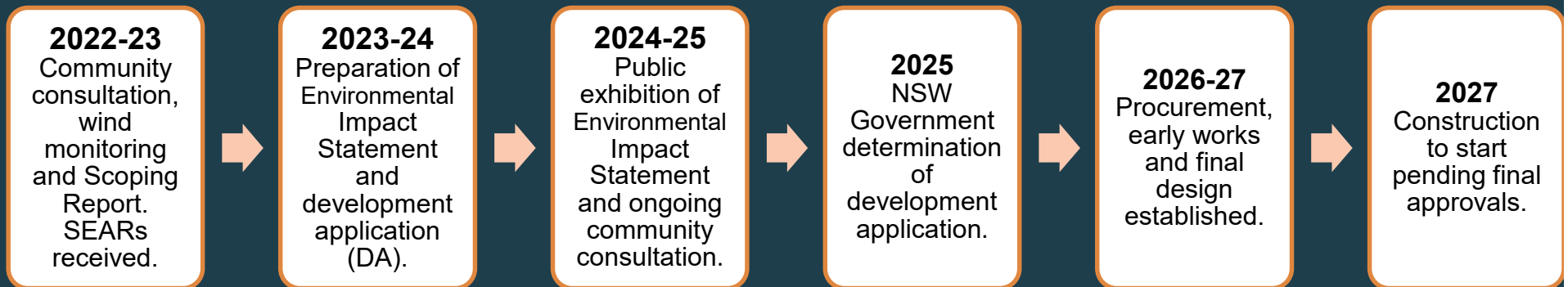
#### LOCATION VERVIEW:

- 60KM SOUTH OF HAY
- 75KM NORTH OF DENILIQUIN

# Pottinger Energy Park



# Pottinger Energy Park Timelines



# Pottinger Energy Park

## Indicative Timeframes (subject to change)



Activities	Target Dates
Procurement	Ongoing - late September 2026
EnergyCo led business forums	June 2026
Financial Investment Decision	December 2026
Construction starts	Early 2027
Battery operational	Mid 2029
Wind Farm operational	Late 2029
Decommissioning or re-energising	~2060

## Pottinger Energy Park

### Port to site route

- DA – Adelaide to site via Broken Hill
- TfNSW Port to REZ
  - Looking at routes from Adelaide Port via Sturt Hwy and Geelong Port via Tocumal, Newell Hwy, Kidman Way and Sturt Hwy.
  - May not arrive in time for Pottinger
- Pottinger – need to modify the project DA for a new route. Currently evaluating options.



# Manny Pottinger



Wednesday November 29, 2023

The Riverine Grazier - 11

## Blast from the Past

### Manny Pottinger honoured in project naming

The information used to create this article was sourced from the website of Lisei Malan Landscape Artists, Edward River Council website, and Someva Website.

Manny Pottinger, an icon of Conargo Shire and surrounding districts, has been honoured in a renewable energy project. Someva Renewables, a specialist renewable energy developer operating in Australia, has named its local project, Pottinger Energy Park.

Someva quotes on its website interesting views of the time windmills were new technology. "Without this vision to embrace a new technology of the time it would have been little short of murder to turn sleepy loose into those paddocks". Terry McGovern, the Wool Barons.

It is a touching connection and acknowledgement of the area in which the project is occurring, to name their local project Pottinger after the Pottinger family and the district windmill progeny Manny Pottinger, who over two generations, installed and maintained windmills in the region from the early 1900s till 1982.

Pottinger Park in Conargo provides a history of the windmill in the region and its importance to growing the Merino industry. This strong history demonstrates the impor-



The erection of this windmill was a project of Edward River Council. Constructed by Williams Contracting, Tim and his father, John put up the windmill at Pottinger Park in Conargo. Image credit: Tim Williams Contracting

tance of Manny Pottinger in supporting livelihoods in the region and how it will continue through the proposed Pottinger Energy Park.

Manny's real name was Lionel, but he preferred to go by Manny.

"A quiet modest man, who went about his business with a minimum of fuss, his windmill repair skills were known throughout the Riverina.

Manny was working for the Falkiner family at Zara station, when Les Falkiner said to him, "You want to get yourself a utility, I'll keep you in work". So, Manny bought a Chevrolet in 1927 for 200 pounds.

He remained with the Falkiner family for 20 years, before going out on his own.

Manny started working on windmills in 1903, and continued to work on them almost until the day he died in 1986, at the age of 82.

Manny's great grandparents owned both the original Conargo Inn and the Billabong Hotel. In later years, his father closed the Conargo, and renamed the Billabong, The Conargo Hotel.

The peppercorn trees on the site were planted over a hundred years ago by Manny's mother Flora, outside the original Conargo Inn.

Manny and Jean Pottinger were married in 1927. They lived in the house near the Conargo Church for 58 years.

Manny and Jean were both widely known and respected.

They quietly got on with what was needed. Jean cared for the church most of her life. Manny restored the Drop Log stables, where he and a mate had once earned a shilling a week for rounding up horses for the stage coach journey between Jerilderie and Demiltique.

Pottinger Park is the centre of Conargo Village, with the Store on one side and the old Conargo Pub site across the road.

The village sits on the crossroads of the original stock routes and has been a familiar intersection for regular travellers on the inland route since early settlement days.

Pottinger Park was the former Conargo Shire Council's last project and Edward River Council's first park.

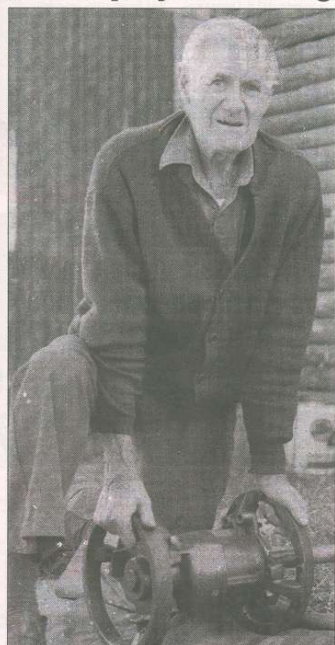
It is a tribute to the late Manny Pottinger, Conargo's resident windmill repair man.

Pottinger Park was one of the projects outlined in the Village Masterplan completed for the Shire in 2009.

Central to the design is a windmill which pays tribute to one of the village's favourite residents. Pottinger Park is dedicated to the unsung heroes of the wool industry Manny represented.

For over half a century, he climbed the rungs of almost every windmill in the district to ensure a reliable supply of water for stock.

A boulevard of Jacaranda trees was chosen by community members to reference the trees Joyce and Manny planted in their garden, next door to the park.



Manny Pottinger, pictured, was invaluable in his work in the Conargo district and surrounds. He was still performing construction and maintenance duties on windmills until shortly before his passing. He was 82 at the time this image was taken. Image credit: Lisei Malan Landscape Artists.

The project has been named after the Manny Pottinger family – one of the first families to install and maintain windmills in the Conargo region. This adoption of wind power in the early 1900s helped to develop a thriving local agriculture industry whereby sheep were able to be watered, and graze on what was otherwise difficult drought-prone country at that time. The project seeks to build on that legacy through clean and reliable energy.

# Pottinger Energy Park Community Benefits



**Local Content Strategy, including a Local Workforce Development and Inclusion Plan**

## **Ambitious Benefits Sharing Program with:**

Landholders, Neighbours to Project, Community Organisations and First Nations Groups



## **First Nations Fund**



**Accommodation and Housing Strategy**

**Decarbonisation Program**



**Contribution to SW-REZ Community Benefits and Employment Program**



## **Local Infrastructure Upgrades**

Roads, Telecoms, Electricity, Agricultural Infrastructure, Bushfire Response



Biodiversity Offset Strategy, Water and Waste Management Plans, and Decommissioning and Rehabilitation Plan

**Contribution to local services including health, education and emergency services**

## **Community Enhancement Program and Fund**

with Hay Shire Council and Edward River Council



# Pottinger Energy Park

## Stakeholder Engagement



### Who we've engaged with

Hay Shire Council, Edward River Council, First Nations groups, businesses, community organisations, training organisations

### What we've heard from the community

- Local jobs and skills development
- Roads and transport route
- Accommodation camp and infrastructure
- Biodiversity
- Local contractor opportunities
- Local utilities, telecommunications, water
- Healthcare and police
- Childcare and schools

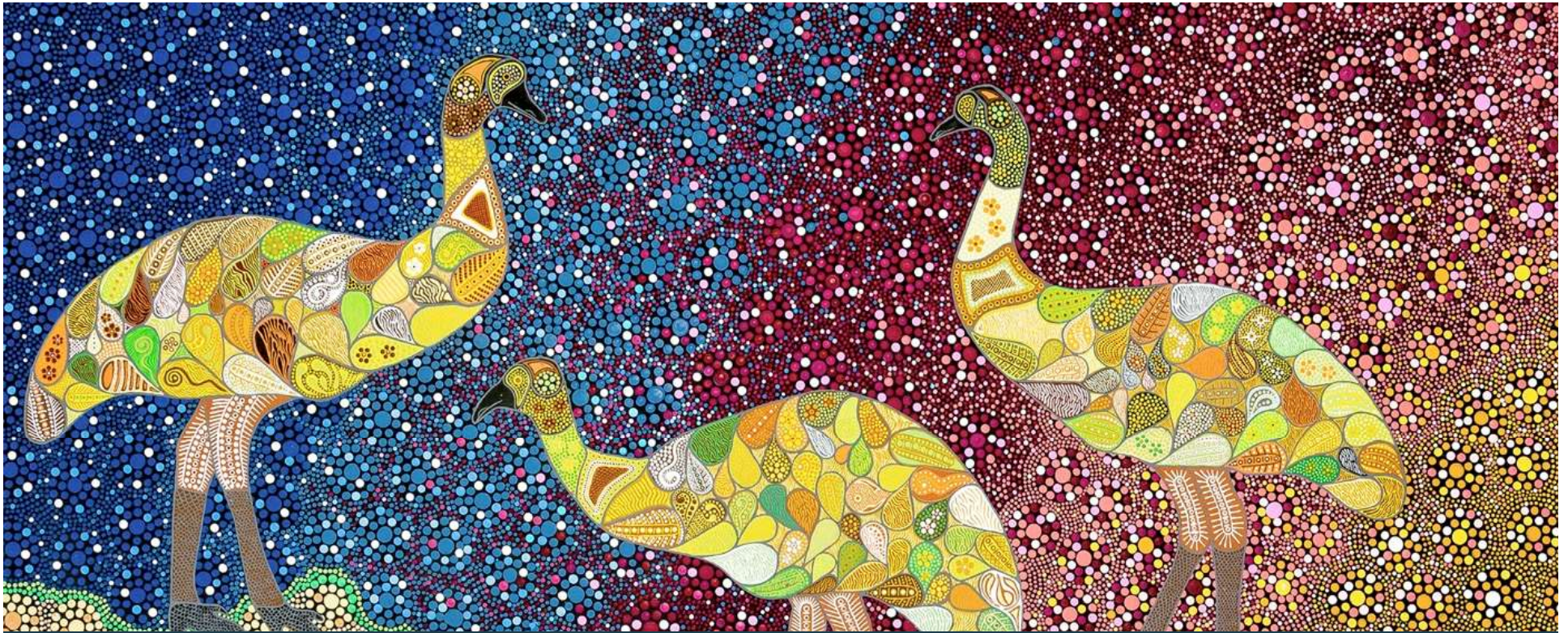


# Pottinger Energy Park Pre-construction Fund



Boorboorban Sporting and Social  
Country University Centre  
Deni Can Assist  
Deniliquin Local Aboriginal Land Council  
Giz A Break  
Hay Children's services  
Hay Inc  
Hay Local Aboriginal Land Council  
Nari Nari Tribal Council  
NSW Indigenous Chamber of Commerce  
River Region Early Education Centre  
Rural Fire Service (MIA District)  
Rural Fire Service (Mid Murray)  
Yerluma Indigenous Knowledge Centre





Thank you

[somevarenewables.com.au/Pottinger](https://somevarenewables.com.au/Pottinger)  
[community@someva.com.au](mailto:community@someva.com.au)



**SOMEVA**  
RENEWABLES