



# POTTINGER ENERGY PARK

*Building connection, sustaining environment.*

The proposed Pottinger Energy Park project is located approximately 60km south of Hay and 75km north of Deniliquin in NSW's historic Western Riverina region. The project is located within NSW's South West Renewable Energy Zone.

Pottinger Energy Park is being developed by Someva and AGL and has been named after the Pottinger family – one of the first families to install and maintain windmills in the region. This adoption of wind power in the early 1900s helped to develop a thriving local agriculture industry and the

Pottinger Energy Park seeks to build on that legacy to create a prosperous future for the region. Once completed, the Pottinger Energy Park will generate up to 1,200MW of clean, affordable and reliable energy – enough to power up to 830,000 Australian homes.

Someva's community co-design process means the Pottinger Energy Park project will operate alongside existing agricultural practices, with up to 220 wind turbines and 300MW of solar supported by an advanced battery storage facility.

## PROJECT BENEFITS

01

### Community Co-design

We are deeply committed to implementing a tailored community co-design process that ensures communities share in and benefit from our renewable energy projects.

02

### Benefits Program

We work closely with local communities, local councils and First Nations people to create local Community Benefits Funds that are tailored to the region.

03

### Neighbour Benefits

We take the time to get to know landowners in the communities where we operate. We pride ourselves on developing long-lasting relationships that we know will last decades and once construction starts on the project we will make payments to a Neighbour Benefits Program.

04

### Supporting Local Jobs

The Pottinger Energy Park plans to create 900 jobs through construction with an additional 80 jobs during operations.



UP TO 220  
WIND TURBINES



UP TO 300 MW  
OF SOLAR ENERGY



POWERING UP TO  
830,000 HOMES



1,200 MW MEGAWATTS  
OF CLEAN ENERGY

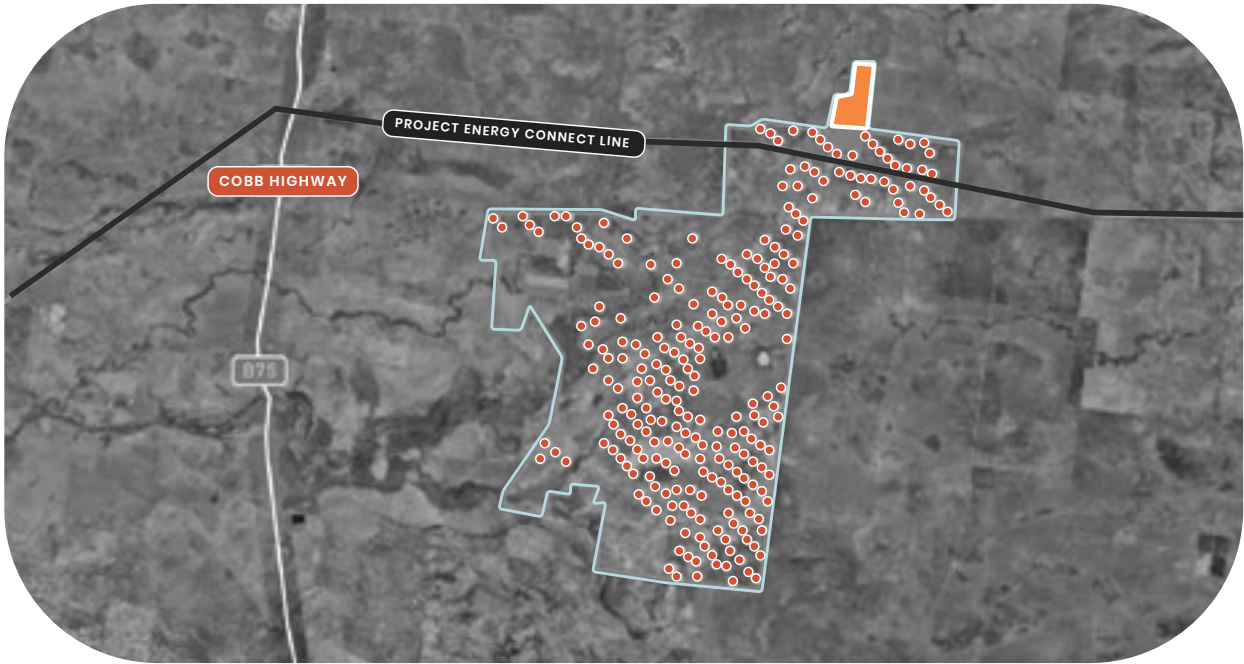


PROVIDING \$1.5 MILLION IN  
COMMUNITY BENEFITS



BATTERY POWER  
500MW / 2000MWH

# PROPOSED POTTINGER SITE MAP



SITE AREA



TURBINES



SOLAR AREA

## LOCATION OVERVIEW:

- 60km South of Hay
- 75km North of Deniliquin

## OUR STATEMENT

“Our process means we spend time *listening to*, and *working with* regional communities to *ensure* our projects deliver *tailored* economic, social, and environmental benefits.”

TIM MEAD, DEVELOPMENT DIRECTOR

## ESTIMATED PROJECT TIMELINE

