



SOMEVA
RENEWABLES

**Coonerang Wind Farm:
Preliminary Public Viewpoint Photomontages
For Consultation
January 2024**

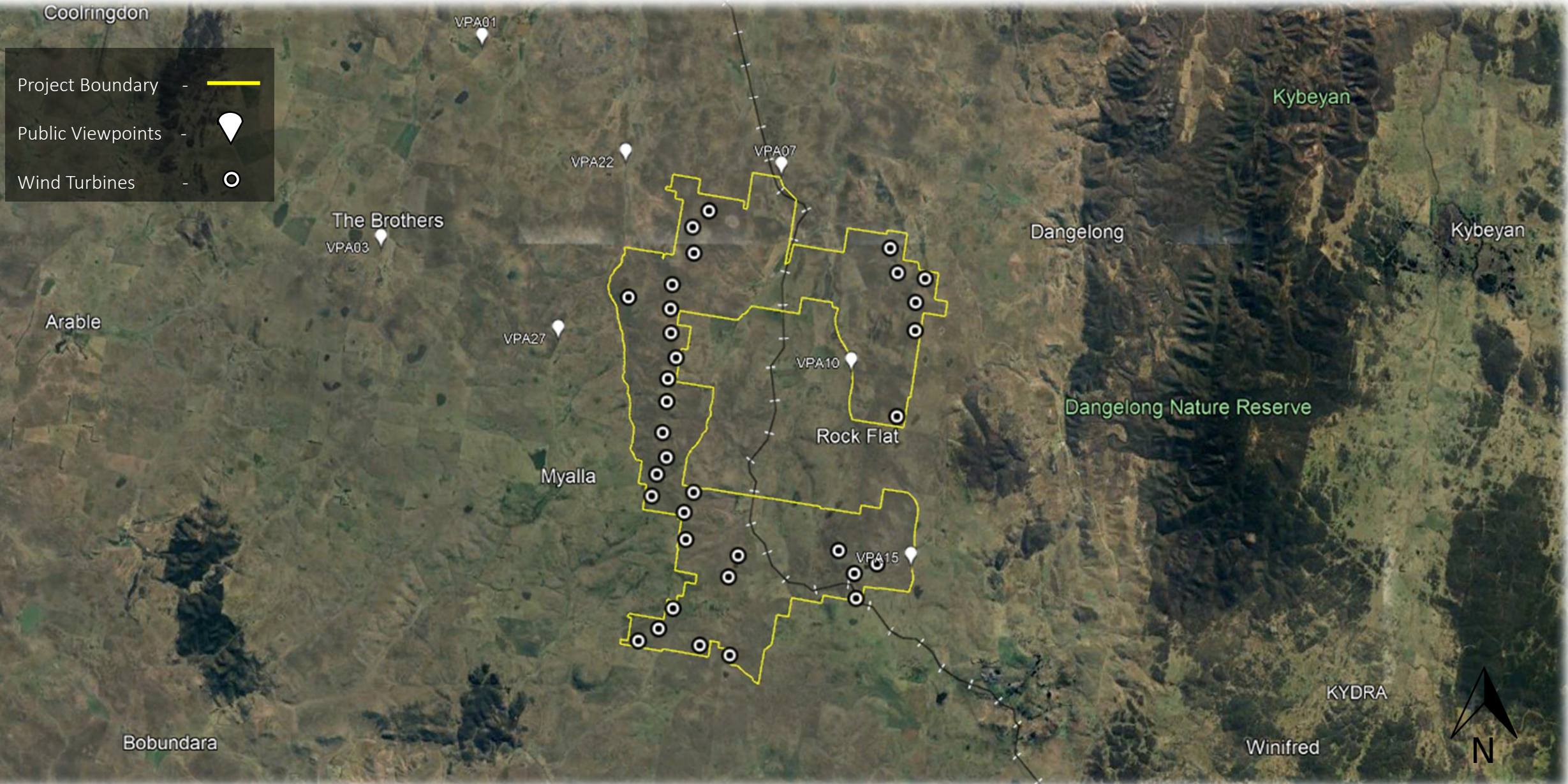
Disclaimer

- The photomontages prepared are in accordance with the Draft Wind Energy: Visual Assessment Bulletin November 2023 issued by Department of Planning & Environment, NSW.
- A photomontage combines a photograph of an existing view with a computer-rendered image of a proposed development (wind turbines).
- The photomontages are used to illustrate the likely view of a proposed development as it would be seen in a photograph (not as it would appear to the human eye in the field).
- These are rendered on a 34-turbine layout. The final layout will be approximately 25, and as such these photomontages overstate the expected extent of visual impact. Turbines depicted are of 262m total height with hub height at 180m.
- These montages are likely to change with further feedback.
- There will be many design iterations for the project and there will be far more assessment information prepared over the course of the next approximately 18 months, which will also be available for the community to review. As such we note that these photo montages are for preliminary consultation purposes only at this stage.
- These images should not be reproduced without permission from Someva Renewables.
- A detailed Landscape & Visual Impact Assessment (LVIA) will be prepared by an independent landscape architect as part of the Environmental Impact Statement (EIS) preparation, and will be based on the final proposed layout.
- Viewpoints (VPAs) shown here are a selection of viewpoints. The LVIA will assess many additional public viewpoints.
- The intent of this is to encourage feedback from the community. Please reach out if you have any comments at community@someva.com.au

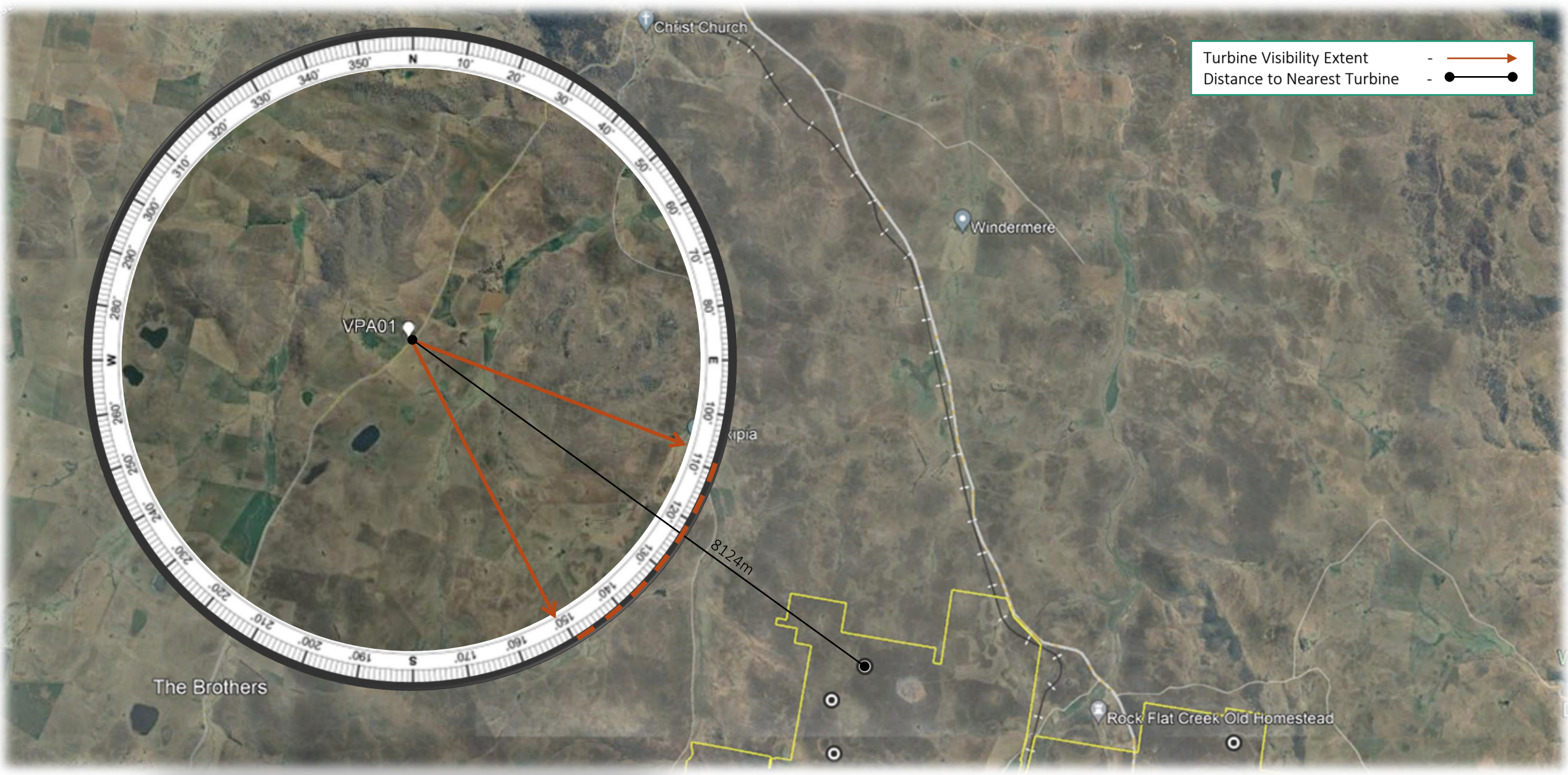
Public Viewpoint Locations

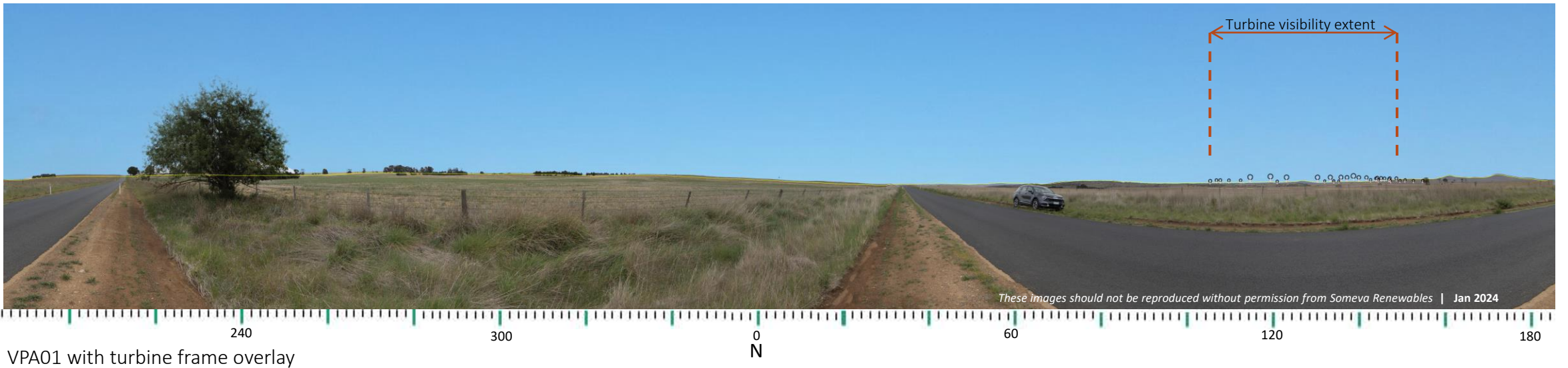


SOMEVA
RENEWABLES



Viewpoint 1 (VPA01) | Maffra Road





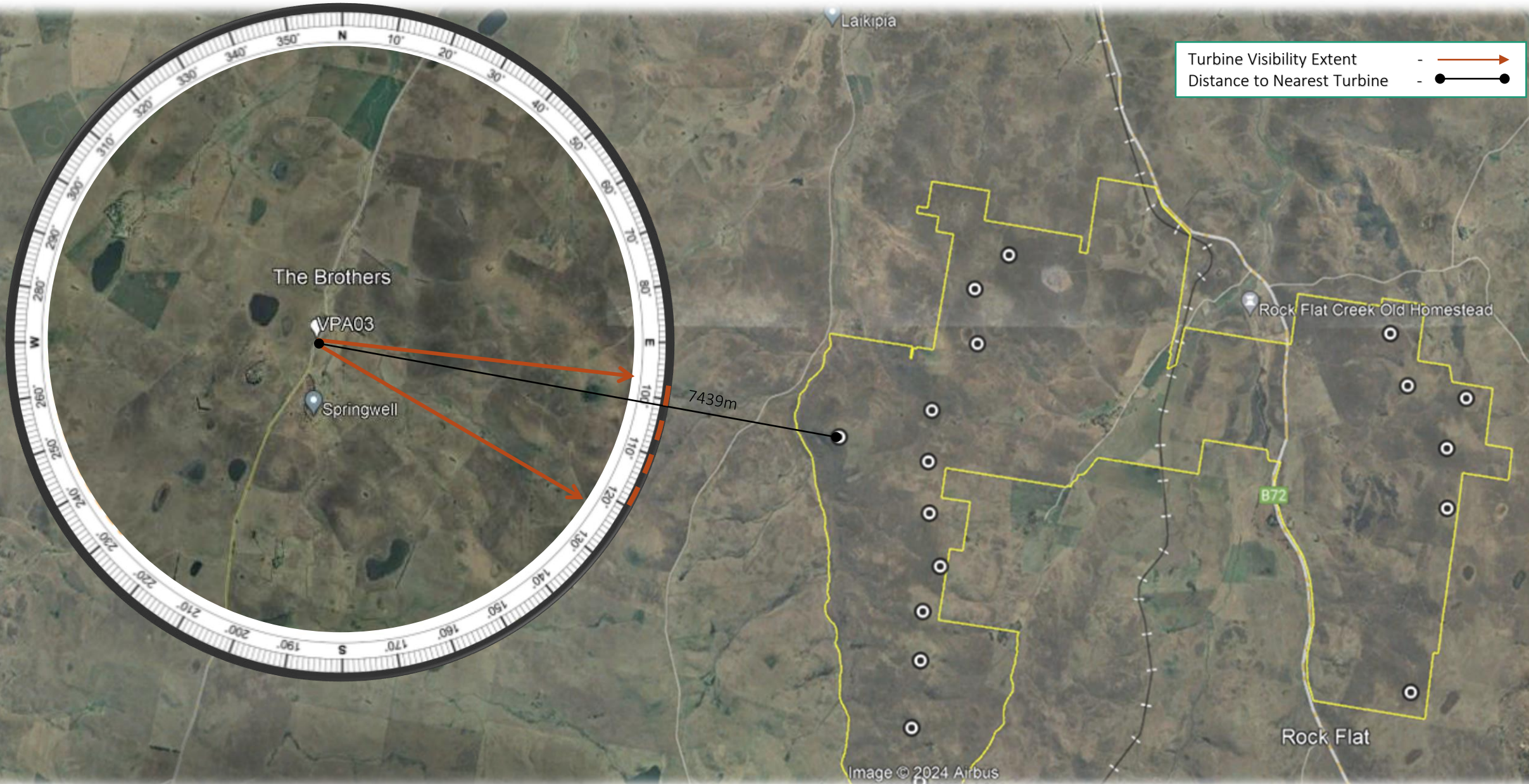
60° Field of View | VPA01



These images should not be reproduced without permission from Someva Renewables | Jan 2024



Viewpoint 3 (VPA03) | Maffra Road





60° Field of View | VPA03



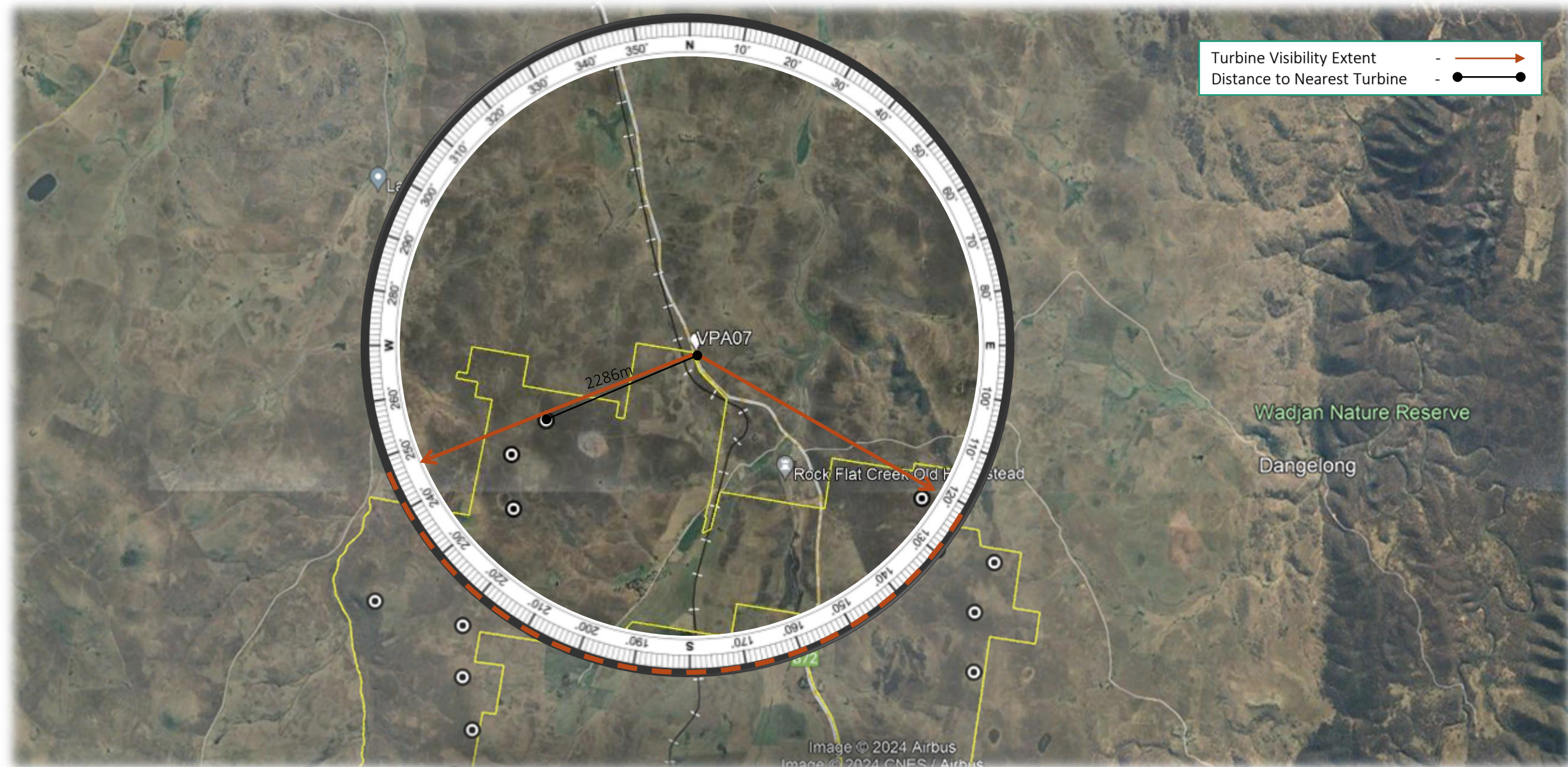
SOMEVA
RENEWABLES

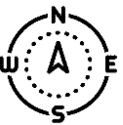
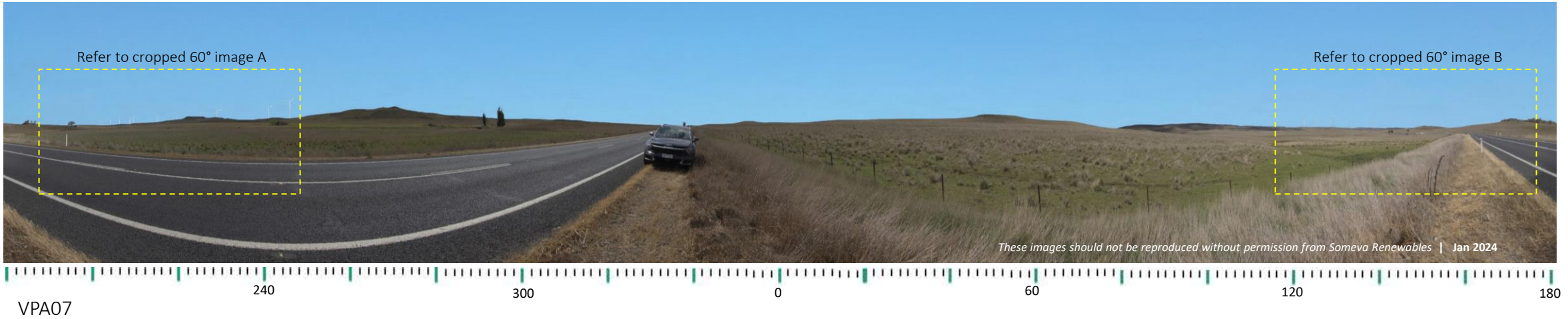


These images should not be reproduced without permission from Someva Renewables | Jan 2024



Viewpoint 7 (VPA07) | Monaro Hwy before Springs road







These images should not be reproduced without permission from Someva Renewables | Jan 2024

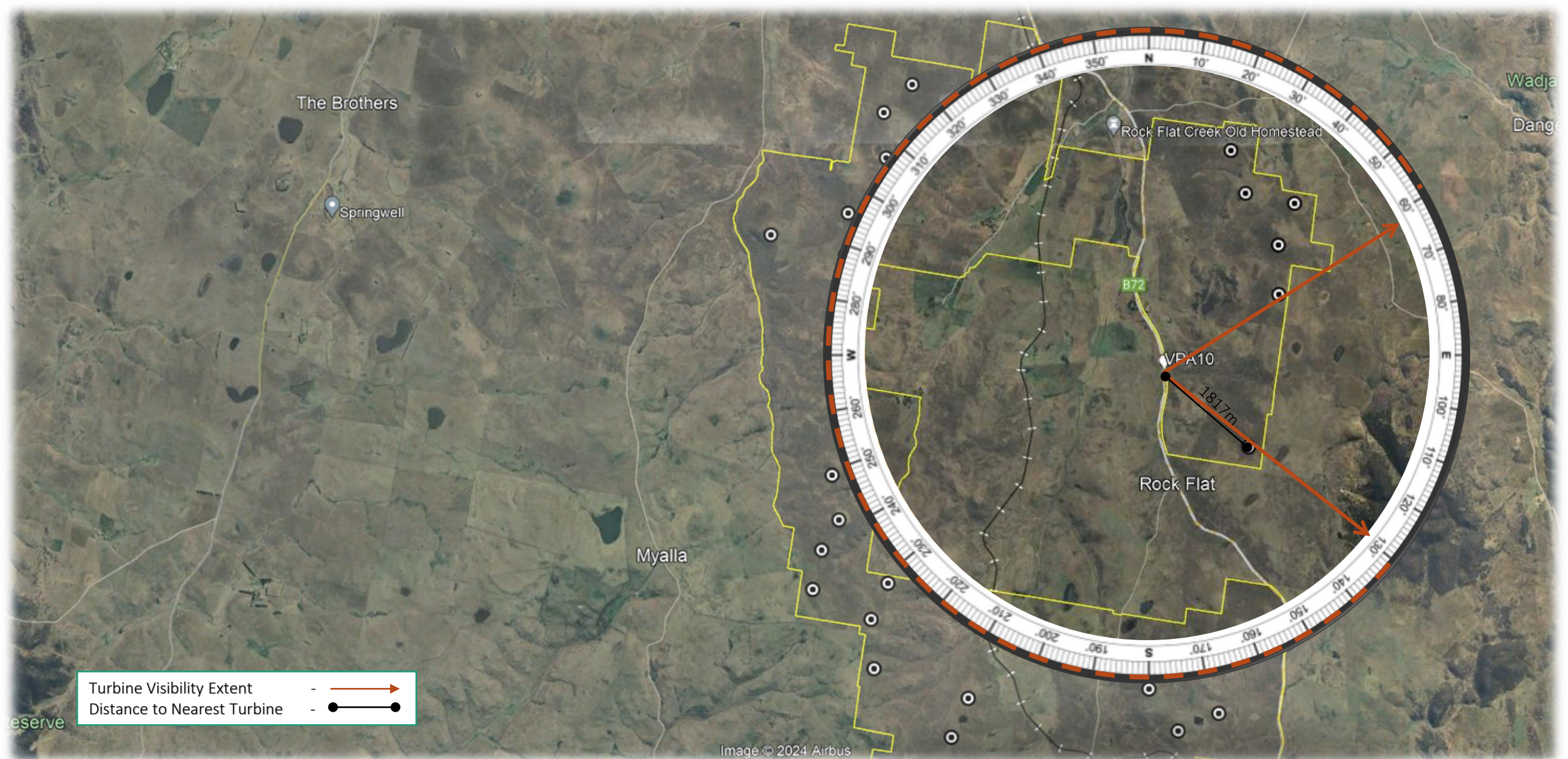




These images should not be reproduced without permission from Someva Renewables | Jan 2024



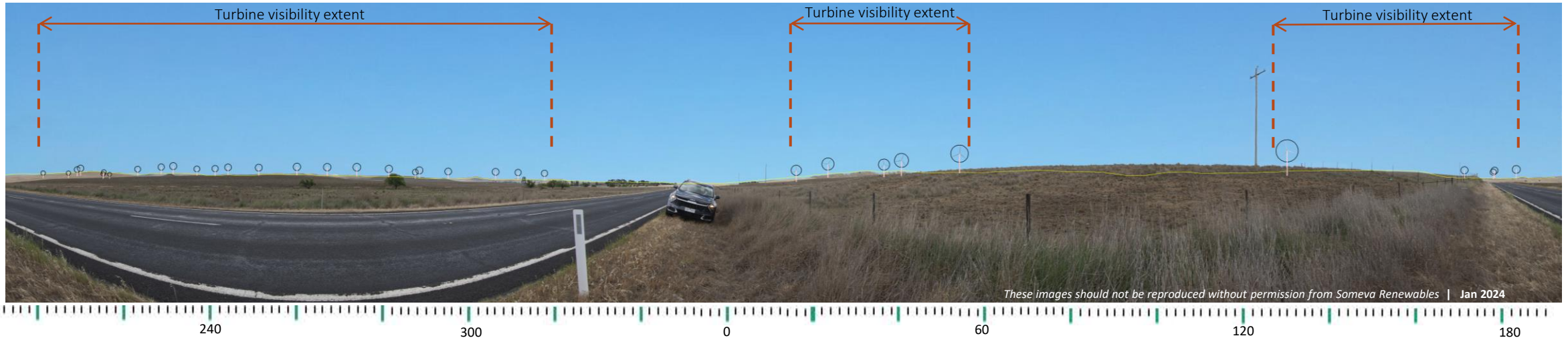
Viewpoint 10 (VPA10) | Monaro Hwy between the Peak road & Springs road





VPA10

These images should not be reproduced without permission from Someva Renewables | Jan 2024



VPA10 with turbine frame overlay

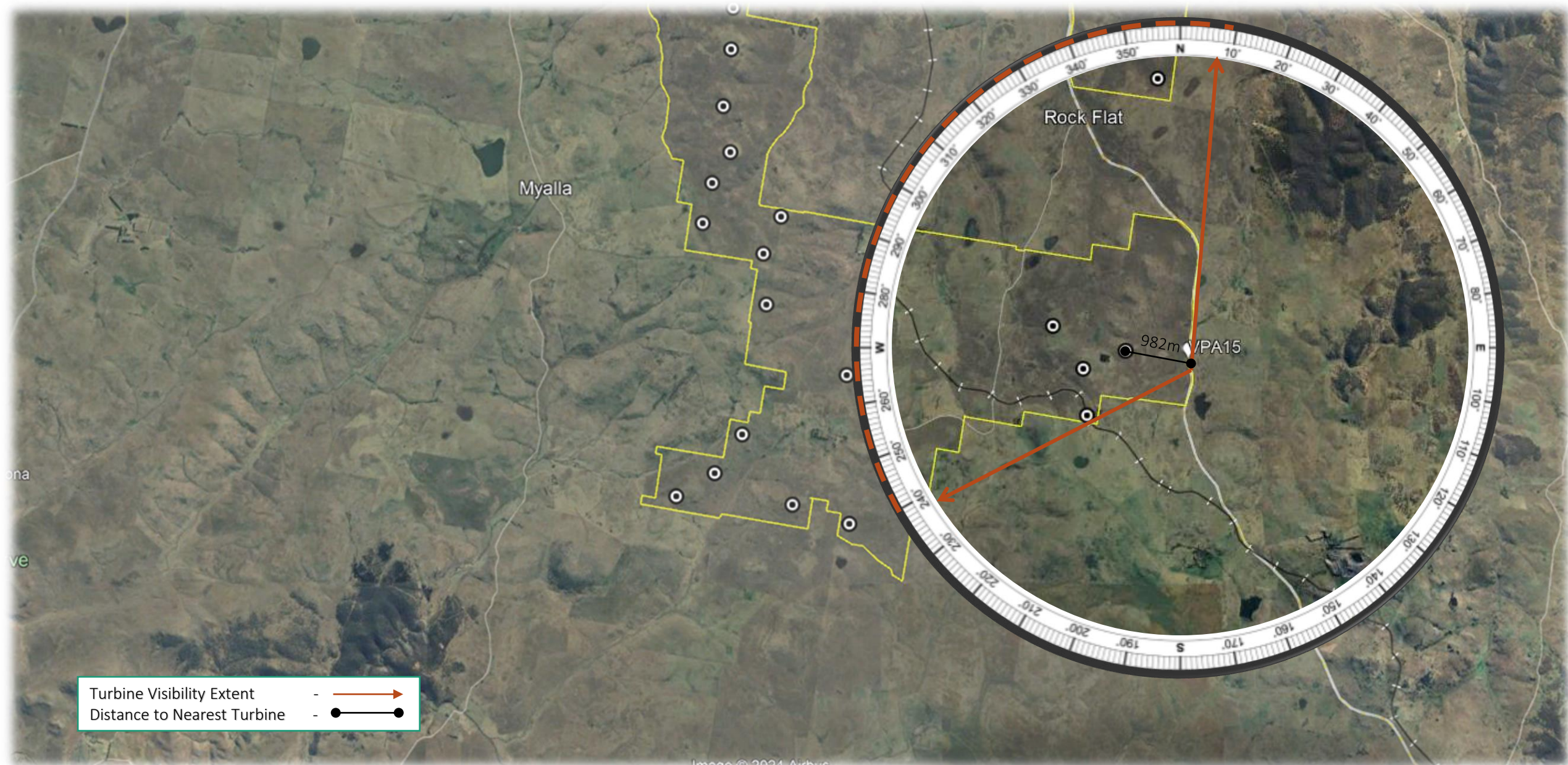
These images should not be reproduced without permission from Someva Renewables | Jan 2024



Viewpoint 15 (VPA15) | Monaro Hwy, South of the Peak road



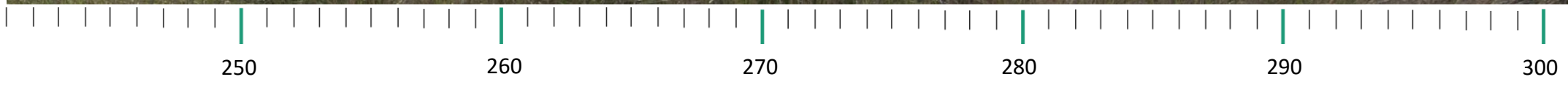
SOMEVA
RENEWABLES



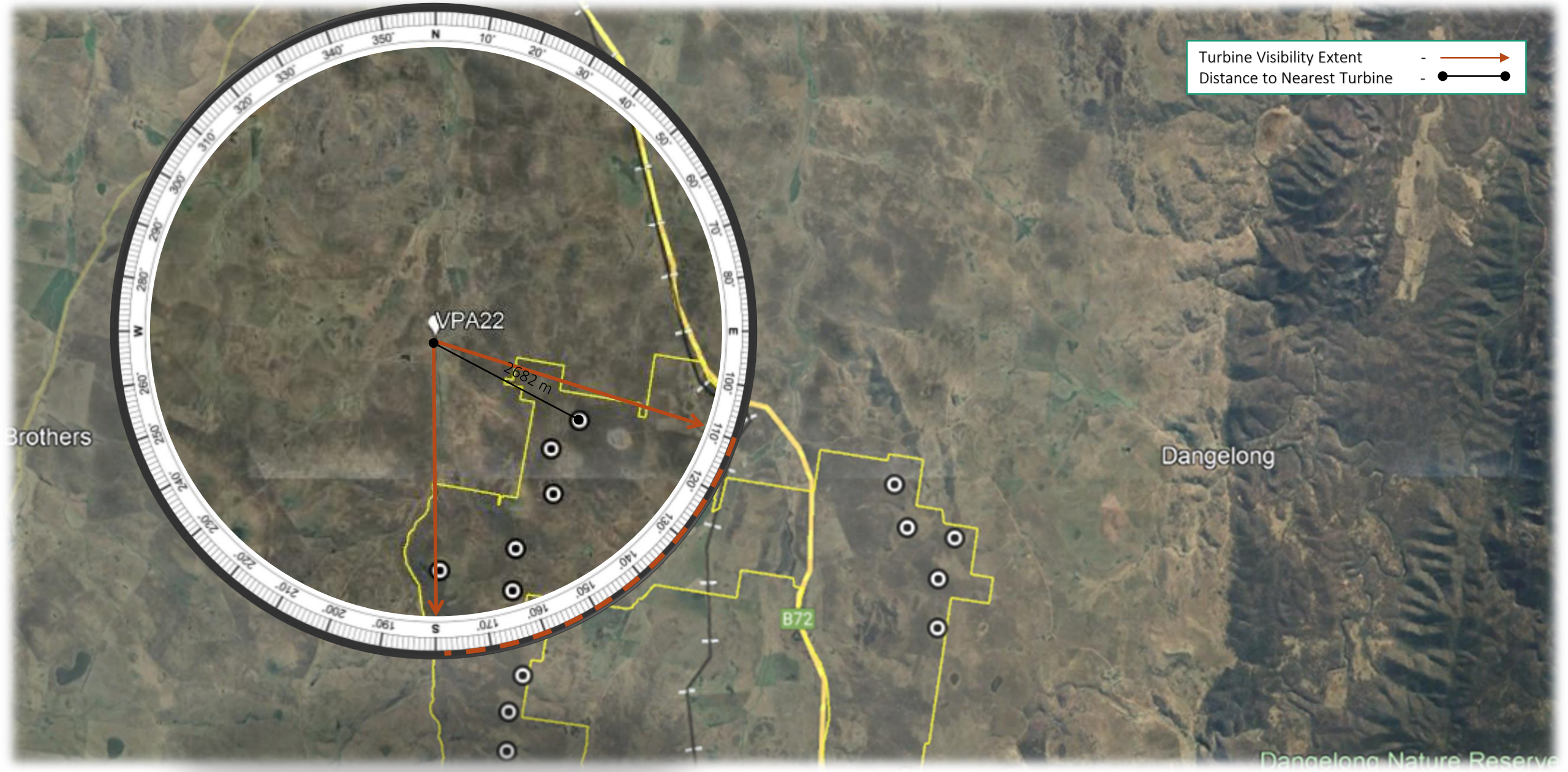


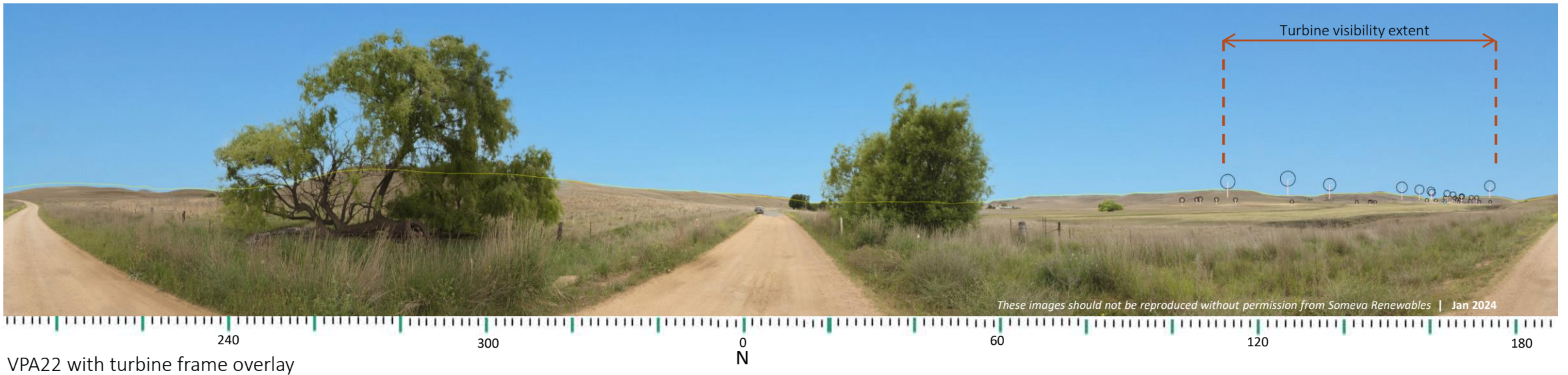


These images should not be reproduced without permission from Someva Renewables | Jan 2024



Viewpoint 22 (VPA22) | Myalla road









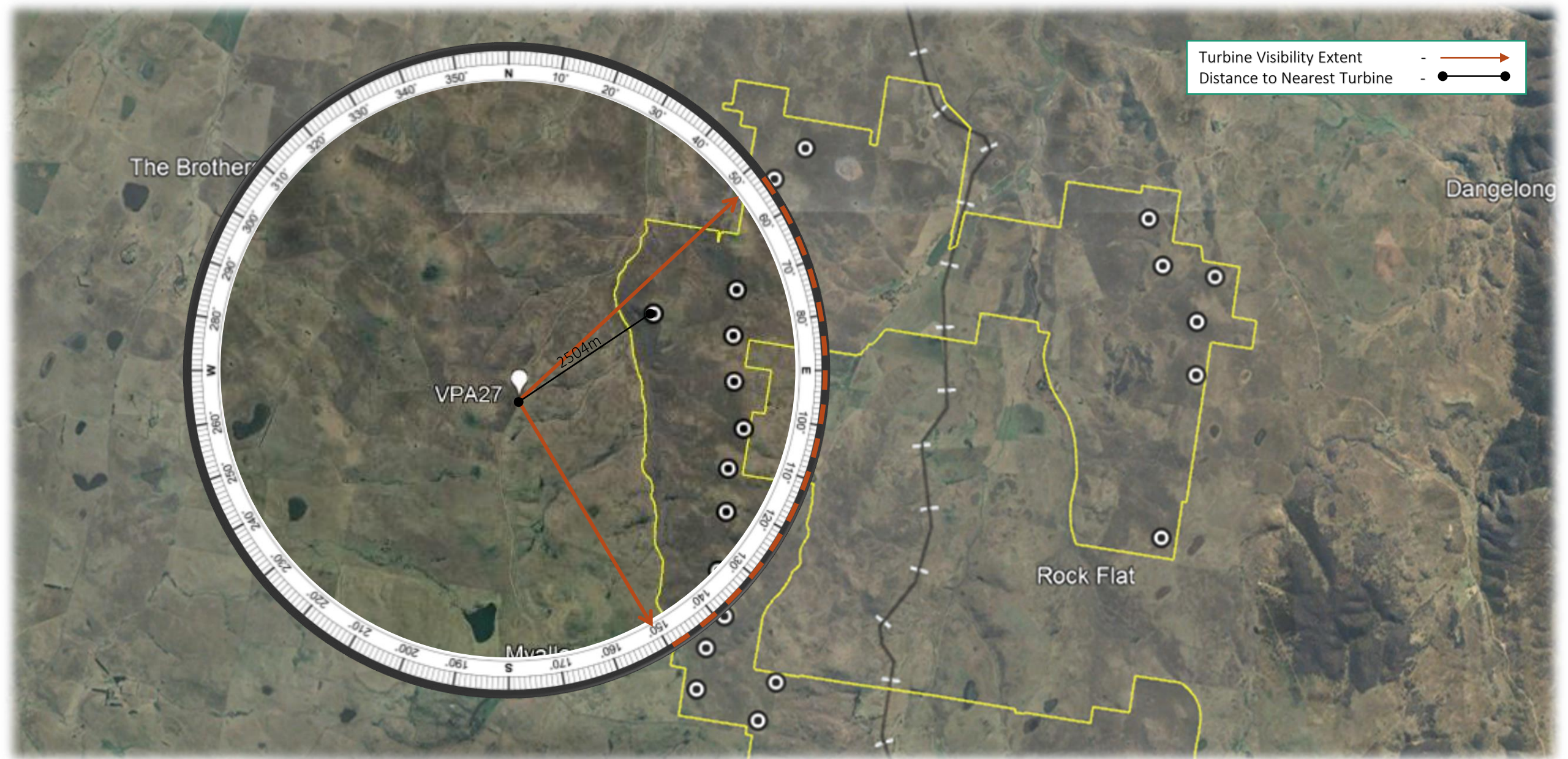
These images should not be reproduced without permission from Someva Renewables | Jan 2024

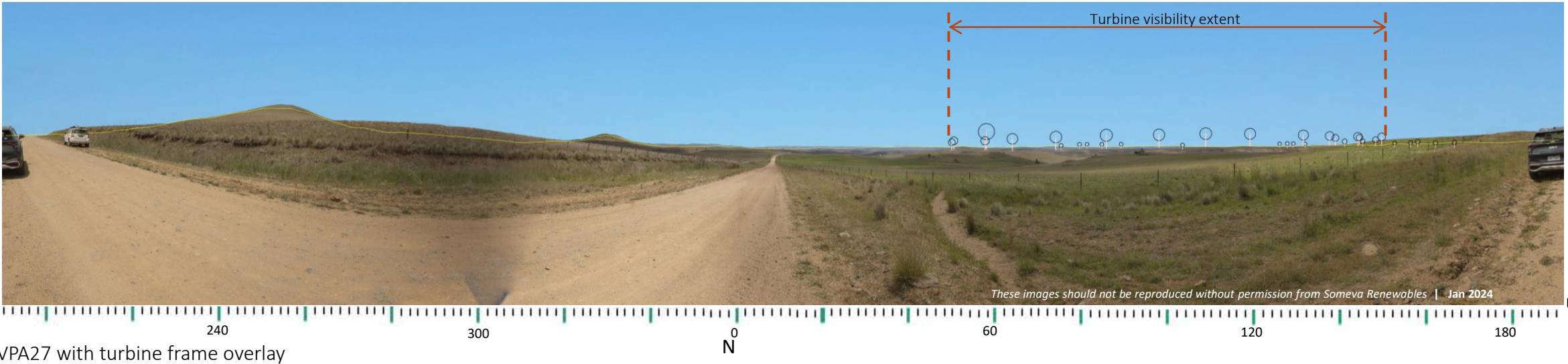
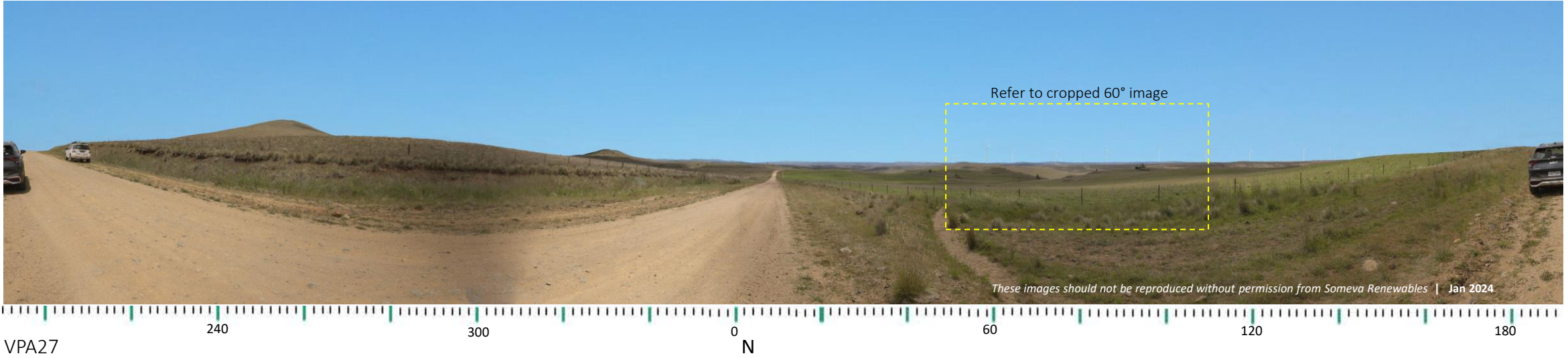




Viewpoint 27 (VPA27) | Myalla road

Turbine Visibility Extent - 
Distance to Nearest Turbine - 

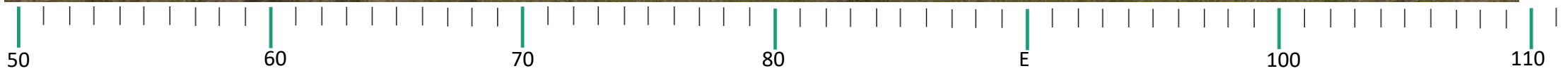




60° Field of View | VPA27



These images should not be reproduced without permission from Someva Renewables | Jan 2024





SOMEVA
RENEWABLES

Contact Us:

www.someva.com.au

community@someva.com.au